



Partners in UK offshore wind

Mona Offshore Wind project

Statement of Community Consultation

Mona Offshore Wind Project



Contents

1	Introduction	03
1.1	Overview of the Statement of Community Consultation	03
2	The proposed development	04
2.1	Why the proposed development is needed	04
2.2	What we are proposing to build for the Mona Offshore Wind Project	05-06
3	The consenting process	08-09
4	Consultation to date	10
5	Our statutory consultation	11
5.1	Overview	11
5.2	Who we are consulting	12
5.3	What we are consulting on	13
5.4	When we are consulting	13
5.5	Where we are consulting	13-14
5.6	How we will consult	14-16
5.7	Welsh language	16
5.8	Publicising the consultation	17
5.9	Seldom heard groups	17
5.10	Requests for documents	17
6	Submitting feedback and what happens next	18
6.1	How to submit feedback	18
6.2	What happens next	18
7	Contact us	19
	Appendix 1	
	Seldom Heard Groups outreach	20
	Appendix 2	
	Local authorities and other stakeholders to be consulted	21-23

About EnBW

Energie Baden-Württemberg AG (EnBW) is one of the largest energy supply companies in Germany and Europe, with a workforce of 27,000 employees supplying energy to around 5.5 million customers. Installed renewable energy capacity will account for 50 percent of EnBW's generating portfolio by the end of 2025.

EnBW was among the pioneers in offshore wind power with its Baltic 1 wind farm in the Baltic Sea. EnBW has developed, constructed and operates four offshore wind farms in Germany with a total installed capacity of 945MW.

Another 960MW from the offshore wind farm He Dreiht are currently under development; the final investment decision in March 2023 cleared the way for the start of construction.

About bp

bp's purpose is to reimagine energy for people and our planet.

bp has set out an ambition to be a net zero company by 2050, or sooner, and help the world get to net zero.

This strategy will see bp transform from an international oil company producing resources – to an integrated energy company providing solutions to customers.

bp already has a significant onshore wind business in the US with a gross generating capacity of 1.7GW, operating nine wind assets across the country as well as a 5.2GW net offshore pipeline.

1 Introduction

1.1 Overview of the Statement of Community Consultation

In February 2021, Energie Baden-Württemberg AG (EnBW) and bp were selected by The Crown Estate (TCE) as Preferred Bidder for two 60-year leases in Offshore Wind Leasing Round 4. The projects to be developed in the two leasing areas, located in the east Irish Sea, are the Morgan Offshore Wind Project and the Mona Offshore Wind Project.

This Statement of Community Consultation (SoCC) sets out our proposed approach to the statutory stage of consultation for the Mona Offshore Wind Project. It has been prepared in accordance with Section 47 of the Planning Act 2008 (the 2008 Act). Section 47 (1) of the 2008 Act requires applicants to 'prepare a statement setting out how the applicant proposes to consult, about the proposed application, people living in the vicinity of the land'. We have publicised this SoCC through a public notice in the Daily Post, a newspaper circulating in the vicinity of the project, as required by Section 47 of the 2008 Act.

This SoCC explains the extent and nature of the community consultation being undertaken and covers:

- A summary of the proposed development
- An overview of the consenting process
- Information on why the project is required
- Details of where and when the consultation is taking place and who is being consulted
- How the consultation will be undertaken, including the materials that will be published and other engagement activities
- Where people can view consultation materials and find out more
- The importance of feedback from local people and how they can provide their comments

This consultation is running from 19 April 2023 to 4 June 2023.

The consultation is an important opportunity for local communities (including residents, businesses, organisations and visitors) to get involved and influence our proposals.

This SoCC has been developed in consultation with the relevant local authorities – including Denbighshire County Council and Conwy County Borough Council.

It is designed to help members of the public understand how they can take part in the consultation and what they can influence. All the feedback we receive will be logged and responded to as part of our Consultation Report.

This consultation follows two non-statutory consultations that took place during 2022 – an introductory consultation, followed by a targeted consultation asking for feedback on proposed substation locations. Details of these consultations can be found in section 4 of this document.

This project is classed as a Nationally Significant Infrastructure Project (NSIP). This means that, in order to receive development consent, we are required to submit an application for a Development Consent Order (DCO) to the Secretary of State for the Department for Energy Security and Net Zero, via the Planning Inspectorate.

We expect that this statutory stage of consultation will be the last consultation on the whole project before we submit our application for development consent.

2 The proposed development

2.1 Why the proposed development is needed

The fight against climate change

Climate change is one of the biggest challenges the world faces. It is affecting every country and we must all play a role in helping to combat it.

In 2015, representatives from the international community met in Paris to agree a global response to the changing climate. In total, 197 countries signed the Paris Agreement to keep temperature rises 'well below' 1.5°C to avoid the worst impacts of climate change. The delegates met again in Glasgow in 2021, where they agreed that more action was needed to achieve the 1.5°C aim and pledged to make the 2020s a decade of climate action and support.

Government policies and offshore wind

The commitments the UK has made to achieving net zero are enshrined in law.

Net zero means reducing greenhouse gas emissions to as close to zero as possible, while capturing any remaining emissions through natural carbon storage and developing new carbon capture technologies.

Achieving net zero means not increasing the amount of greenhouse gases in the atmosphere. The best way to do this is to move towards technologies such as renewable energy, which do not create harmful emissions.

To reach our climate goals, the UK government has adopted a number of strategies for achieving net zero – most notably the 10-point Plan for a Green Industrial Revolution and the Net Zero Strategy: Build Back Greener.

In Wales, the aim is for renewables to generate electricity equal to 70 per cent of Wales's consumption by 2030. This is set out by the Welsh Government in its Net Zero Wales plan.

All of these plans recognise the importance of offshore wind in achieving net zero goals in the UK. In fact, 'advancing offshore wind' is point one in the UK government's 10-point plan.

The UK already generates around 10GW of its power from offshore wind, which is more than any other country in the world. It plays an increasingly important role in our energy mix – for a period on 21 May 2021, offshore wind was providing 62 per cent of our total energy output. But we need to go a lot further.

To achieve our climate goals, we need to quadruple our offshore wind generation – that means having 50GW generating capacity installed and operating by 2030.

This is why projects such as Morgan and Mona are so important.

2.2 What we are proposing to build for the Mona Offshore Wind Project

To construct, operate and maintain Mona, we will need a combination of offshore and onshore infrastructure.

The proposed capacity of the Mona Offshore Wind Project is 1.5GW.

Offshore infrastructure

Our offshore infrastructure will include wind turbines, substation platforms, export cables and landfall.

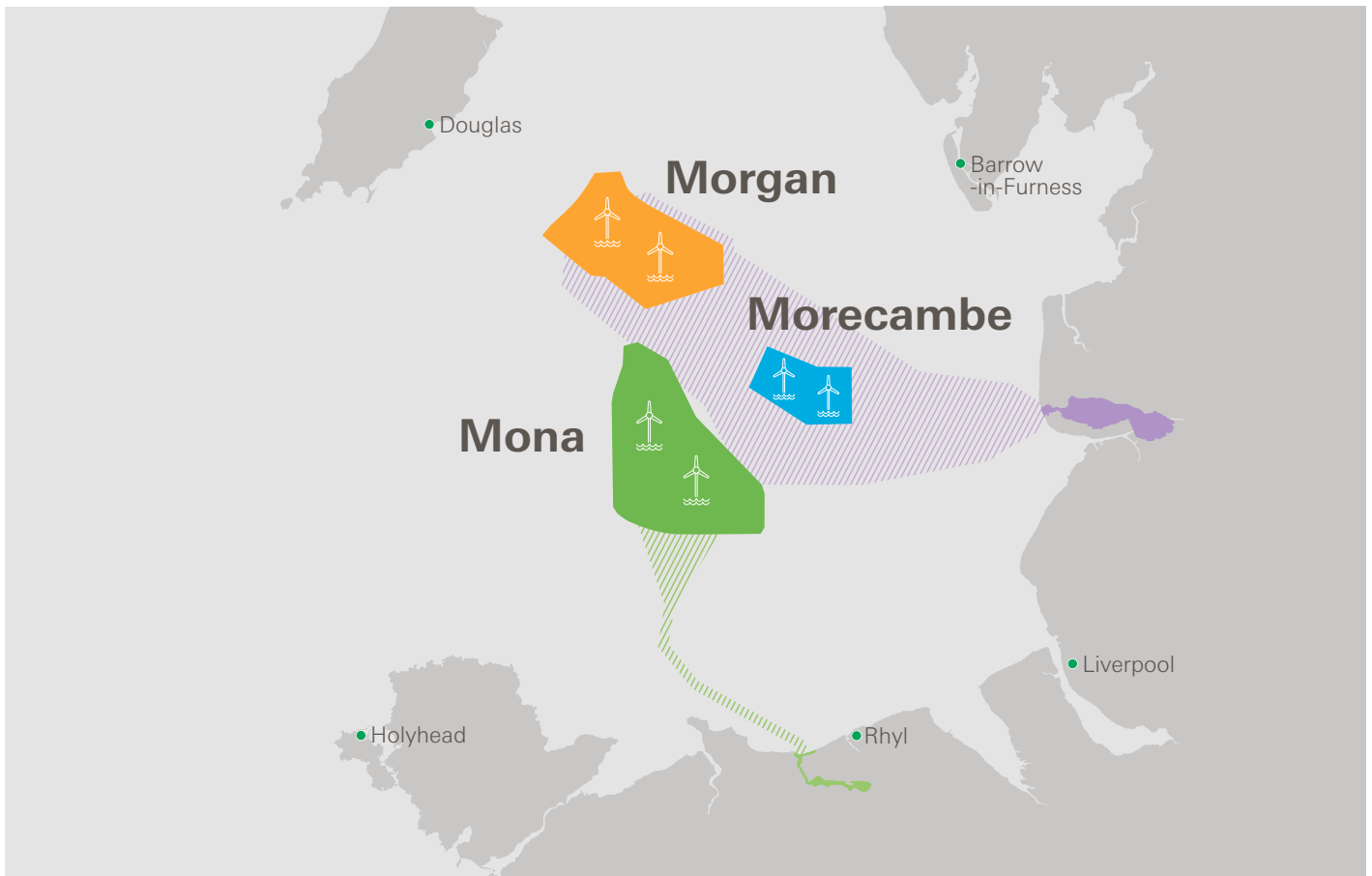
The wind farm will consist of up to 107 wind turbines. The final number of turbines will be determined based on engineering and environmental considerations, along with feedback from stakeholders.

Offshore substation platforms will be located within the array area. They will contain the equipment required to transform electricity into a higher voltage for transportation onshore.

Cables would then transfer electricity from the offshore substation platforms to the landfall. The cables will be located in the Mona Offshore Cable Corridor, a search area within which the offshore cables will be routed.

We expect the offshore export cables would make landfall in Llanddulas.

They will be brought through the intertidal area to a location where they can be connected to the onshore infrastructure.



Onshore infrastructure

Our onshore infrastructure will take electricity from a landfall point (where the offshore cables reach the shore) to the electricity transmission network. To do this, we will need to construct infrastructure including underground cables, a new onshore substation near Bodelwyddan in Denbighshire, and a connection to the existing substation identified by National Grid for our connection.

Our onshore cable corridor

As responsible developers, we are committed to designing routes with the best interest of our host communities in mind. We consider many factors to make sure we find the best possible solution for both the project and local communities. This includes avoiding constraints such as existing settlements and infrastructure, or areas that are protected for environmental reasons.

For our project, we are also using guidance from specialist organisations, such as The Crown Estate Cable Route Protocol and Natural Resources Wales.

We've identified a corridor within the Mona Onshore Cable Corridor Search Area. At this time, it is anticipated that the onshore corridor will be approximately 15km in length, with cables typically buried deeper than 1m below ground.

The cables would run south from the landfall and pass to the west of Abergele, before travelling east to Bodelwyddan.

Our substation

The project needs a purpose-built substation to contain and control the equipment that transforms the power supplied by the wind farm into useable electricity.

The substation will also house the auxiliary equipment needed for its own operation and maintenance.

The project has already completed a targeted, non-statutory consultation that asked local communities and stakeholders to consider a list of seven possible substation locations.

We used feedback from this consultation – as well as the findings of our detailed, ongoing technical studies and assessments – to reduce the number of potential substation locations to two. These two alternatives are now the subject of further consultation as part of this statutory stage.

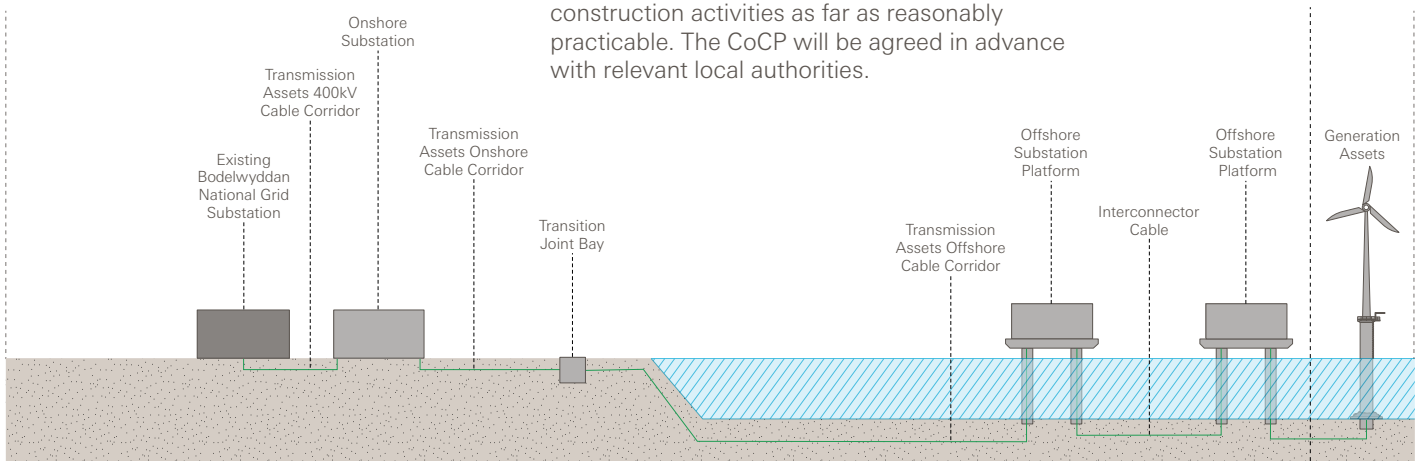
A landscape, ecology and hydrology management plan will be prepared for the onshore substation site that will set out the mitigation measures for screening, ecological habitats and the management of surface water runoff.

A temporary construction compound and working area will be required to facilitate the construction of the onshore substation.

The final site of the onshore substation will be identified taking into account the findings of the Environmental Impact Assessment (EIA) process and feedback received.

Environmental management

Construction will be undertaken in accordance with a Code of Construction Practice (CoCP). This will include strategies and control measures for managing the potential environmental effects of construction and limiting disturbance from construction activities as far as reasonably practicable. The CoCP will be agreed in advance with relevant local authorities.



The components of the Mona Offshore Wind Project



3 The consenting process

The Mona Offshore Wind Project is classed as a Nationally Significant Infrastructure Project (NSIP) and as such we intend to submit an application for a Development Consent Order.

Applications for development consent are submitted to, and examined by, the Planning Inspectorate and a decision is made by the relevant Secretary of State, in this case the Secretary of State for the Department for Energy Security and Net Zero.

NSIPs are determined with regard to National Policy Statements (NPSs). The relevant NPSs for this proposed development are the Overarching National Policy Statement for Energy (EN-1), the National Policy Statement for Renewable Energy Infrastructure (EN-3) and the National Policy Statement for Electricity Networks Infrastructure (EN-5). The NPSs set out national policy against which proposals for major energy projects will be assessed by the Planning Inspectorate and decided by the Secretary of State.

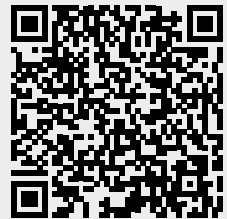
Before submitting an application, the 2008 Act requires developers to carry out consultation with local communities and statutory consultees.

The early involvement of local communities, local authorities and statutory consultees allows an applicant to obtain important information about the potential social and environmental impacts and opportunities of a scheme from consultees so that potential mitigation measures can be considered and, where appropriate, built into the proposed development before an application is submitted.

Once this SoCC has been published, the Mona Offshore Wind Project will continue to progress through its development phase, starting with the delivery of this statutory consultation.

Following the submission of our application, the Planning Inspectorate will follow a number of steps to receive and review the application, seeking further comment from interested bodies and individuals.

More information on the planning process for NSIPs can be found at: www.infrastructure.planninginspectorate.gov.uk/wp-content/uploads/2013/04/Advice-note-8.0.pdf



The wind farm will be in Welsh waters, therefore we need to apply for a Marine Licence to build and operate the offshore elements of the project, under the Marine & Coastal Access Act 2009. Applications are determined by Natural Resources Wales on behalf of the Welsh Government: www.naturalresources.wales/permits-and-permissions/marine-licensing

Below is a summary of how the DCO application process works:

4 Consultation to date

We are committed to early engagement with communities and have already provided local people with an opportunity to comment on the proposed development.

We carried out a first stage of non-statutory consultation between 7 June and 3 August 2022. At this consultation, the project presented search areas for the offshore transmission infrastructure and search areas for the onshore cable routes and substations.

To allow stakeholders and members of the public an opportunity to engage with our proposals at an early stage we arranged a series of in-person events, made up of formal exhibitions and pop-up events.

Exhibition events were held in convenient locations at times that allowed people to visit around their daily lives, be it work, school run or other commitments.

Pop-up events were located in areas where members of the public could be engaged as they go about their lives, in locations that allow for people to speak to the team quickly and easily.

We also arranged an online consultation for those who were unable to attend in-person events. This was held on 12 July at 6:30pm. A recording was made of the session and made available via the project website for viewing at a later date.

Following the conclusion of this first stage of consultation, we analysed the feedback we had received, along with conducting further technical impact assessments and design work to develop our proposals ahead of further public consultation. Comments we receive from future consultations will also be used to develop our final proposals.

Between 26 September and 7 November 2022 we held a second, targeted consultation which focused on potential locations for our substation.

Again, exhibition events were held in convenient locations and at times that would allow people to attend alongside their existing commitments. An online consultation was held on 12 October at 6.30pm and, once again, a recording of the session was made available on the project website.

The feedback collected during this consultation was combined with our ongoing environmental assessments and technical studies to help identify our preferred substation site.

Environmental Impact Assessment (EIA)

The development requires Environmental Impact Assessment (EIA) as defined in The Infrastructure Planning (Environmental Impact Assessment) and The Marine Works (Environmental Impact Assessment) Regulations. EIA is being undertaken to ensure the likely effects of the proposed development are properly understood, including whether appropriate mitigation can be put in place. The application will therefore be accompanied by an Environmental Statement containing the results of the EIA process.

Preliminary Environmental Information Report (PEIR)

We are also required to produce a Preliminary Environmental Information Report (PEIR), which is an important document within the DCO process relating to environmental considerations.

The PEIR will include survey methodologies and results, and the likely significant environmental effects of the proposed development. It will also set out measures that could prevent, reduce or offset any environmental effects identified as part of early assessments and consultation.

Copies of the PEIR will be made available on the project website www.morganandmona.com



5 Our statutory consultation

5.1 Overview

The statutory consultation is being carried out in accordance with the requirements of the 2008 Act. We expect this will be the final development-wide consultation before EnBW and bp make an application for development consent.

This consultation is to help people living in the vicinity of the proposed development to understand it and any effects it may have.

This gives local people an opportunity to provide further feedback on the proposed development and to influence it.

We'll look carefully at all of the feedback we receive, and this will be considered to help finalise our proposals ahead of our application. All the feedback we receive will be summarised in our Consultation Report, which will be an important part of our application.

5.2 Who we are consulting

At the heart of every consultation are the people who live and work in the community. Consulting with people living near to the project who may be affected by the development is an important part of the DCO planning process. Section 47 of the Act describes these as people 'living in the vicinity of the land to which the proposed application relates'. The insight and local knowledge we receive through each stage of consultation means that our project can best reflect the needs and expectations of those who live and work closest.

When developing the publicity mailing zone (see 5.5 below) we made sure to take into account the need to engage with a wide cross section of society. Our consultation will be open to anyone who feels directly or indirectly impacted by the proposals. We will actively seek to engage with the following people and groups:

- **Local communities** – people with homes and businesses in the consultation zone and those outside who have previously commented on the proposals;
- **Elected representatives** – community councils; county councillors; Members of Parliament; and Members of the Senedd;
- **Seldom heard groups** – individuals and groups that may have difficulties taking part in the consultation process for a range of reasons. We will monitor opportunities and engage as appropriate. If required, we will carry out non-statutory targeted consultation in order to better reach these audiences;
- **Identified special interest groups** – such as local wildlife, heritage and leisure groups

Additional consultees

In addition to the statutory requirements that have informed the preparation and publication of this SoCC, the 2008 Act requires that a number of additional groups are consulted.

- **s42: Prescribed bodies and statutory consultees**

Prescribed bodies as listed in Schedule 1 of the Infrastructure Planning (Applications: Prescribed Forms and Procedure) Regulations 2009 (as amended).

Among others, the prescribed bodies to be consulted include all community councils in whose area the proposals are sited.

- **s43: Local authorities**

Local authorities, as defined under section 43, including those in whose area the proposals are sited, and adjoining local authorities.

A full list of these consultees, and other interest groups the project has identified and will consult with is available in Appendix 2.

- **s44: Land owners/those with an interest in the land**

Those with an interest in, or a relevant claim to, the land to which the proposed application relates (such as ownership, tenancy and/or other interests).

All persons identified as having an interest in the land to which the proposals relate, within one or more of the categories set out in section 44.

We will engage with these consultees directly and will be inviting them to comment on our proposals during the consultation. We'll then consider their feedback alongside the feedback we receive from the public.

EnBW and bp have been, and will continue to, contact landowners and occupiers to discuss and seek to agree rights to construct, operate and maintain the new onshore equipment, voluntarily.

Where the project is unable to reach agreement, it can seek the use of compulsory acquisition powers within the submitted application for development consent.

5.3 What we are consulting on

We have already been engaging and consulting local communities and stakeholders but our statutory phase of consultation will begin following the publication of this SoCC.

Our approach to engagement and consultation is to seek general feedback on the proposals, including specific focuses on:

- The location and array for our offshore wind turbines and associated infrastructure
- Our proposed onshore cable route
- Our proposed substation site
- How we can minimise our construction impacts
- Our Preliminary Environmental Information Report

5.4 When we are consulting

The statutory consultation will run from **19 April 2023 to 4 June 2023**.

The minimum consultation period is 28 days starting from the day after the publishing of consultation documents, such as the PEIR. We are extending this period to give people as much opportunity as possible to provide their feedback.

More details about our previous consultations and the progress of the project beyond this point can be found in Section 4 (Consultation to date) and Section 6 (Submitting feedback and what happens next).

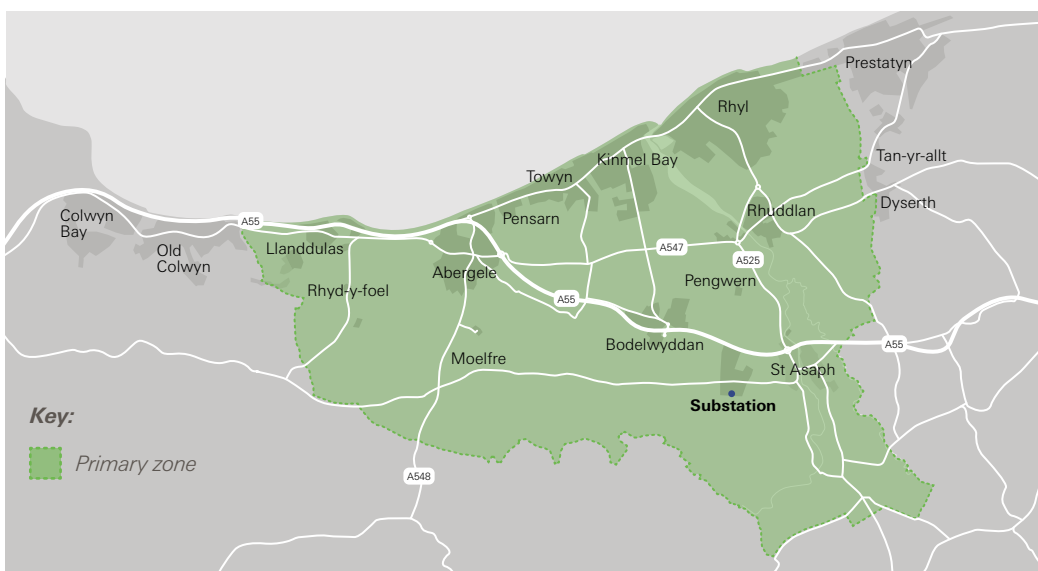
5.5 Where we are consulting

At the non-statutory consultation, we consulted within a primary zone which was identified largely by the search area for onshore infrastructure but also by giving consideration to the potential visual impacts of the turbines themselves.

For this consultation, we have identified a primary zone which reflects the likely direct impacts of the project. A map of this primary zone is available below.

Community consultation activities will continue to be focused within this zone and we are engaging with those living and working in the area.

A consultation postcard will be mailed to all residential and business addresses within the primary zone and exhibition events will take place in locations most appropriate and convenient to those in the area. We will also write to anyone that took part in the first consultation.





We understand that there may be interest in the proposed development beyond the primary zone, particularly with regard to potential visual impacts from offshore infrastructure.

The project will therefore be promoted beyond the primary zone through advertising and press releases in local newspapers with a wider circulation than the consultation zone, for example, the Daily Post, which circulates across North Wales. Alongside this publicity campaign, we will continue to engage with community councils and local authorities, whose administrative boundaries extend beyond the primary zone.

Their support will ensure that awareness is raised beyond the edges of our primary zone.

All information will also be available on the project website www.morganandmona.com

5.6 How we will consult

We will consult using a variety of methods to help explain our proposals and encourage people to provide their comments.

Community materials

These materials will help people to understand the proposed development and provide their comments to the consultation. They will be easy to follow and, where appropriate, make strong use of images and graphics.

- **Consultation postcard** – this A5 dual sided postcard will be sent to all residential and business addresses in the publicity mailing zone. It will highlight the consultation dates and clearly explain where further information can be found, with a focus on encouraging people to visit the website or contact us via the project information channels. Details of the consultation exhibition events will also be included.
- **Website** – the website (www.morganandmona.com) will be the main public source of information and will be updated to explain the latest proposals. The website will make clear how people can take part in the consultation and what the deadline for feedback is. It will include an interactive feedback map of the proposals and a feedback form. All project materials will also be available on the website.

- **Newsletter** – a newsletter will be delivered directly to all homes in the consultation area, explaining our plans for consultation and setting out how to get involved.
- **Consultation brochure** – this brochure will provide a summary of the latest proposals and details of the consultation. It will make clear how people can take part in the consultation and what the deadline for feedback is. The brochure will be available at consultation events, on request from the project team and made available on the website.
- **Feedback form** – this questionnaire will provide an easy way for people to record and submit their feedback. People will be able to submit feedback by filling in the printed form, or visiting our project website and completing the form online. The feedback form will be designed to encourage people to provide feedback specific to our proposals but also to provide wider feedback in relation to the entirety of the proposed development.

A range of other materials, including the PEIR, will also be made available to help people better understand our proposals and provide us with their feedback.



Community events

To give local people the opportunity to meet the project team, better understand the proposals and ask any questions they may have, consultation events will be held in the local area. These events will be organised in communities close to the onshore infrastructure.

Two types of events will be held:

- **Consultation events** – a series of public events for people to visit and meet the project team, find out about the project and ask any questions they might have.

The events will be located at accessible public locations. Project materials will be available at the event and people will be able to submit feedback.

- **Pop-up events** – members of the team will be out and about in the communities, to provide information on the project and answer any questions people might have. These events will be located in areas where people are going about their daily activities such as supermarkets, shopping centres, leisure venues and transport hubs.

The events, which will be publicised in the postcard, via print advertising and on the project website, will be held at the locations and times listed opposite.

We will also carry out an online webinar. This will be publicised in consultation materials and people will be able to register online. The webinar will consist of a overview presentation about the project and a Q&A session, with a range of project team members available to answer questions.

It is our preference to hold a range of in-person and online events. But in the event that we are unable to hold in-person events, we will make alternative arrangements to deliver a larger, broader range of online consultation events.

Reference locations

Printed copies of our SoCC and our consultation materials will be available to view at the locations shown in the table. Please call your nearest venue to check the most up to date opening times.

Consultation events

These are drop-in events, meaning you can come along at any time between the hours stated below. There will be printed materials and members of the project team there for you to talk to and find out more.



Please check www.morganandmona.com before attending a consultation event in case of any unforeseen changes.

Location	Date	Time
Llanddulas Village Hall Beulah Avenue, Llanddulas, Abergelge LL22 8FH	Thurs 4 May	3pm to 7pm
St Asaph Parish Church 1 High Street, St Asaph LL17 0RG	Fri 5 May	3pm to 6pm
Ramsey Town Hall Parliament Square, Ramsey, Isle of Man IM8 1RT	Thurs 18 May	3pm to 7pm
Bodelwyddan Village Hall Ronaldsway, Bodelwyddan, Rhyl LL18 5TE	Fri 19 May	3pm to 7pm
Douglas Borough Council Douglas Town Hall, Ridgeway Street, Douglas, Isle of Man IM99 1AD	Fri 19 May	3pm to 7pm
Neuadd Owen Village Hall Cefn Meiriadog, St Asaph, Denbighshire LL17 0EY	Sat 20 May	10am to 1pm

Pop-up events

These are smaller-scale events in areas of high footfall, but still a great way to meet the project team and ask any questions you may have.



Location	Date	Time
Llandudno Library Mostyn Street, Llandudno LL30 2RP	Weds 3 May	2pm to 5pm
Rhyl Tourist Information Centre The Village, West Parade, Rhyl LL18 1HZ	Thurs 4 May	10am to 1pm
Amlwch Library Parys Road, Amlwch LL68 9AB	Sat 6 May	10am to 12pm

Enquiries and information

The project will operate a freephone enquiry line answer phone service during the consultation. People will be able to leave a message and a member of the project team will respond swiftly. People are able to engage with all of these channels in Welsh.

A dedicated email address and freepost is also available.

- **Freephone** – 0800 860 6263
- **Email** – info@monaoffshorewind.com
- **Freepost** – Freepost MONA

5.7 Welsh language

We recognise the importance of the Welsh language and are committed to ensuring the consultation is accessible for those that wish to take part in Welsh. All community materials will be available in Welsh and Welsh speakers will be available at all consultation events and webinars.

People will be able to provide feedback in Welsh and will receive an acknowledgement in Welsh.

For the purposes of analysing and reporting Welsh feedback alongside other responses, Welsh feedback will be translated by the project's appointed translation agency (which is based in North Wales).

Should an enquiry be submitted via phone, a Welsh speaking member of the team will respond to that individual.

Deposit locations

These are publicly accessible venues where printed copies of the SoCC, consultation brochure, PEIR NTS and feedback form can be viewed.



Isle of Man

Location

Opening times

Henry Bloom Noble Library
8 Duke Street, Douglas,
Isle of Man IM1 2AY

Mon-Weds and Fri: 8.30am to 5pm
Thurs: 10am to 7pm
Sat: 9am to 4pm

Ramsey Town Library
Parliament Square, Ramsey,
Isle of Man IM8 1RT

Mon-Thurs and Sat: 9am to 4:30pm
Fri: 9am to 4:00pm

North Wales

Location

Opening times

Amlwch Library,
Parys Road, Amlwch, Anglesey
LL68 9EA

Tues: 9.30am to 12.30pm and
2pm to 5pm
Weds, Fri, Sat: 9.30am to 12.30pm
Thurs: 2pm to 7pm

Bangor Public Library,
Gwynedd Road, Bangor
LL57 1DT

Mon-Tues: 9:30am to 6:30pm
Weds-Fri: 9:30am to 5pm
Sat: 9:30am to 1pm

Llandudno Library
Mostyn Street, Llandudno
LL30 2RP

Mon-Weds and Fri: 9am to 5:30pm
Thurs: 10am to 7pm
Sat: 9:30am to 3pm

**Rhyl Library, Museum
& Arts Centre**
Church Street, Rhyl, LL18 3AA

Mon: 9:30am to 6pm
Tues-Fri: 9:30am to 5pm
Sat: 9:30am to 12.30pm

Online event

If you can't make it along to an in-person event, you can register to attend our online event from 19 April 2023 by scanning the QR code below, or visiting www.morganandmona.com. This event will include a presentation by the project team and a question-and-answer session.



Location

Date

Time

This online event will take place on Zoom.

Tues
9 May

6pm to
7pm



5.8 Publicising the consultation

- **Advertising** – the project will run two rounds of advertising in local media – at project launch and two weeks before the close of consultation, encouraging people to take part. These will consist of print advertising in local newspapers such as the Daily Post. We will also advertise online, using local media platforms and Google.
- **Press releases** – news releases will be issued to local media during the consultation. A press release will be issued at the start of consultation and another two weeks before the close of consultation, encouraging people to take part.
- **Social media** – promoting the consultation on social media channels that are owned and managed by EnBw and bp.
- **Public notices** – the project will also take out public notices in local and national newspapers, as required by the 2008 Act.
- **Posters** – these will be printed and issued for display via local councils, venues hosting events and to other local venues such as supermarkets, shops and libraries.
- **Letters** – these will be sent to key stakeholders including local councillors, inviting them to take part and to encourage others to do so. Letters will also be sent to other local community groups and organisations.

5.9 Seldom heard groups

To allow people to engage with the consultation at their own convenience, the project has designed a 'digital first' consultation. This allows individuals and groups to take part even if they cannot make a consultation event. The online webinar will be open to anyone to attend and ask questions of the project team. All information will be available on the website and people are encouraged to submit feedback using the online feedback map or online feedback form. Those engaging with the consultation will be able to ask questions and find out more by calling the enquiry line or using the freepost or email addresses.

For those who are less comfortable engaging digitally, we have developed the consultation to be accessible and this has played an important role in planning consultation activities.

Community events are being held in accessible public locations and over a number of days to encourage attendance. Ensuring that venues are accessible via public transport, have sufficient parking and are easy to navigate is key.

We recognise that some individuals or groups may have difficulties taking part in the consultation process for a range of reasons. We have identified a number of organisations representing seldom heard groups in the area (Appendix 1). These organisations will be written to at the start of the consultation. Requests for specific consultation activities will be planned and agreed with the requesting organisation so that our activities best meet the needs of those it represents.

5.10 Requests for documents

We will respond to reasonable requests for further copies of documents. Requests for hard copies will be reviewed on a case-by-case basis. A reasonable copying charge may apply, to be paid by the recipient in advance.

6 Submitting feedback and what happens next

6.1 How to submit feedback

The consultation is an important opportunity for local communities to get involved and influence the proposals and help the project understand the effects of the proposals in order to establish opportunities to mitigate these. The consultation is running from 19 April 2023 to 4 June 2023.

There are several ways to submit feedback:

- **Feedback map** – this interactive map of the proposals allows people to drop a pin and leave comments online and / or attach files (such as document or images) to their feedback.
- **Feedback form** – available on the project website www.morganandmona.com, at community events or by request from the consultation team.
- **By email** – to info@monaoffshorewind.com.

- **In writing** – to **Freepost MONA** (please be advised it is not possible to send registered post to a freepost address).

Everyone submitting their comments to us (and providing their contact details) will receive an acknowledgement that their feedback has been received.

We are not able to respond individually to every question, but the themes and issues raised during this consultation will be summarised in our Consultation Report, which will be published as part of our DCO application.

We will reply to queries received about the logistics of the consultation itself, details of the events being held, availability of consultation materials or advice on how to submit a response. The project takes data privacy seriously and all data will be held in line with GDPR best practice.

6.2 What happens next

At the close of consultation, we will look carefully at all the feedback we've received and, alongside further technical work, finalise our proposals.

If, as a result of the feedback, the project changes to the extent that it is necessary to carry out further consultation, this will be carried out in accordance with the principles set out in this SoCC and targeted geographically as is appropriate to the change.

A Consultation Report will be produced that sets out how feedback from both statutory and non-statutory consultations has shaped the design of the proposed development.

The Consultation Report will include a summary of consultation responses, including how this feedback was considered and how it may be used. It will detail the consultation process, demonstrating how it was undertaken in accordance with this SoCC, and how it met all legal requirements.

It will also demonstrate how we worked with local planning authorities to ensure that our consultation was proportionate and tailored to local communities living in the vicinity of the project area.

This Consultation Report will be submitted to the Planning Inspectorate as part of the DCO application. Any comments received from consultees may therefore be submitted to the Planning Inspectorate either in part or in their entirety with the application.

When the application has been submitted to, and accepted by, the Planning Inspectorate, the project will advertise that the application has been submitted and accepted, explaining the next steps in the process.

Indicative timeline

- **2022/23**
 - **Summer 2022**
First stage of consultation on Mona Offshore Wind Project (non-statutory)
 - **Autumn 2022**
Ongoing technical and environmental work
 - Substation consultation for Mona Offshore Wind Project
 - **Spring 2023**
Second stage of consultation (statutory)
- **2024**
 - **Q1 2024**
Applications submitted for Development Consent Order (DCO) and other licences
- **2025**
 - Expected decision on the DCO by the Secretary of State
- **2026**
 - Expected Final Investment Decision (FID)
- **2027**
 - First grid connection for power export commissioning of offshore substations
- **2028/29**
 - Expected start – Commercial Operation Date (COD)

7 Contact us

Throughout this project we'll be engaging with communities and stakeholders to ensure that the project continues to develop and progress in a way that allows for people to engage in the most meaningful way.

If you have any questions about this Statement of Community Consultation, would like alternative document formats, have questions about our project to date or would like any further information, you can contact us through the following channels.



Find out more on our website
www.morganandmona.com
or use this QR code



Phone:
0800 860 6263



Email:
info@monaoffshorewind.com



Post:
Freepost MONA

Appendix 1 – Seldom Heard Groups outreach

Age Connects Wales
Age UK Gwynedd
North Wales Society of the Blind
North Wales Together
The FDF (formerly the Flintshire Disability Forum)
Stand North Wales (CIC)
Anglesey Youth Services
Conwy Youth Services
Denbighshire Youth Services
Flintshire Integrated Youth Provision
Gwynedd Youth Services
The Youth Service
North Wales Deaf Association
Homelessness Services, North Wales Housing
Bangor Cathedral Foodbank
Arfon Foodbank
Glan Clwyd Hospital
Llandudno General Hospital
Holywell Hospital
Royal College of Nursing (North Wales)
Coleg Llandrillo
Welsh Refugee Council
DPIA (national organisation)
Rhyl Masjid & Islamic Cultural Centre
Chabad Retreat Centre and Synagogue
Denbighshire Voluntary Services Council (DVSC)
North Denbighshire Communities First
Community and Voluntary Support Conwy (CVSC)

Appendix 2 – Local authorities and other stakeholders to be consulted

Local Planning Authorities

Conwy County Borough Council
 Cyngor Gwynedd
 Denbighshire County Council
 Eryri National Park Authority
 Flintshire County Council
 Isle of Anglesey County Council

Senedd members

Member of the Senedd for Aberconwy
 Member of the Senedd for Arfon
 Member of the Senedd for Clwyd West
 Member of the Senedd for Delyn
 Members of the Senedd for North Wales
 Member of the Senedd for Vale of Clwyd
 Member of the Senedd for Wrexham
 Member of the Senedd for Ynys Môn

Members of Parliament

Member of Parliament for Aberconwy
 Member of Parliament for Alyn and Deeside
 Member of Parliament for Arfon
 Member of Parliament for Clwyd West
 Member of Parliament for Delyn
 Member of Parliament for Vale of Clwyd
 Member of Parliament for Ynys Môn

Welsh Government departments

Department for Infrastructure
 Department for Transport
 Flood and Coastal Risk Management Branch
 Marine Enforcement Officers
 Marine and Fisheries
 Transport Policy, Planning and Partnerships

Community Councils

Abergele Town Council
 Amlwch Community Council
 Bagillt Community Council
 Bangor City Council
 Bay of Colwyn Town Council
 Betws-yn-Rhos Community Council
 Bodelwyddan Community Council
 Brynford Community Council
 Caerwys Community Council
 Cefnmeiriadog Community Council
 Connah's Quay Town Council
 Conwy Town Council
 Cylch-y-Garn Community Council
 Dyserth Community Council
 Flint Community Council
 Halkyn Community Council
 Holyhead Town Council
 Kinmel Bay and Towyn Community Council
 Llanasa Community Council
 Llanbadrig Community Council
 Llanddeiniolen Community Council
 Llanddona Community Council
 Llanddulas Community Council
 Llanddyfnan Community Council
 Llandudno Town Council
 Llandygai Community Council
 Llaneilian Community Council
 Llanfachraeth Community Council
 Llanfaethlu Community Council
 Llanfairfechan Community Council
 Llanfairtalhaiarn Community Council
 Llanllechid Community Council
 Mechell Community Council
 Menai Bridge Town Council
 Moelfre Community Council
 Mostyn Community Council
 Prestatyn Town Council

Rhosybol Community Council
Rhuddlan Community Council
Rhyl Town Council
St. Asaph Community Council
Tref Alaw Community Council
Trefnant Community Council
Trelawnyd and Gwaenysgor Community Council
Tremerichion, Cwm and Waen Community Council
Y Felinheli Community Council
Ysceifiog Community Council

Other stakeholders

Actif Woods
Age Connects Wales
Age UK Gwynedd
Ambition North Wales
Amlwch Harbour
Anglesey Tourism Association
Anglesey Youth Services
Bangor University
Bionet
Braddan Parish Commissioners
Bro Môn
Business In The Community Wales
Cadw
Caernarfon Harbour
Cambria Business School
CBI Wales
Cemaes Harbour
Centre for Environment, Fisheries and Aquaculture Science (Cefas)
Civil Aviation Authority
Clwyd & Conwy Rivers Trust
Clwyd-Powys Archaeology Trust
Colwyn Bay Heritage
Come to Wales (Flintshire Tourism Association)

Country Land and Business Association (CLA) Wales
Conwy Friends of the Earth Local Group
Conwy Youth Services
Creu Conwy
Crogga
Denbighshire Heritage Service
Denbighshire Youth Services
Department of Environment, Food and Agriculture, Isle of Man government
Department of Infrastructure, Isle of Man government
Douglas Borough Council
Environment Agency
Federation of Small Businesses Wales
Flintshire Fairtrade Coalition
Flintshire in Business
Flintshire Integrated Youth Provision
Friends of the Isle of Anglesey Coastal Path
Gwynedd Business Network Limited
Gwynedd Youth Services
Heritage - Aura Wales
Holyhead Port Authority
Holyhead Sailing Club
Isle of Man Business Network
Isle of Man Chamber of Commerce
Isle of Man Parliament (Tynwald)
Isle of Man Steam Packet Company
Joint Nature Conservation Committee
Llandudno Hospitality Association
Llanfairfechan Sailing Club
Manx Birdlife
Manx National Heritage
Manx Utilities
Manx Wildlife Trust
Maritime and Coastguard Agency
Mersey Alliance
Mezeron Ltd

Ministry of Defence
Mostyn Dock
National Trust Wales
Natural England
Natural Resources Wales
North and Mid Wales Association
of Local Councils
North Wales Society for the Blind
North Wales Together
North Wales Wildlife Trust
Ørsted (Burbo Bank/Burbo Bank Extension)
Port Penrhyn
Port St Mary Commissioners
Prestatyn Sailing Club
Rhyl Yachting Club
Royal Commission on Ancient and Historical
Monument of Wales
Royal Society for the Protection of Birds
(RSPB)
RSPB Cymru
RSPB North England
RSPB South Stack
Royal Yachting Association
RWE
Territorial Seas Committee,
Isle of Man government
The Clwydian Range & Dee Valley Area
of Outstanding Natural Beauty
The FDF (formerly the Flintshire Disability
Forum)
The Llangollen Chamber of Trade & Tourism
The Pavilion Theatre
The UK Trades Confederation
The Youth Service
Trinity House
Visit Conwy
West Cheshire and North Wales Chamber
of Commerce



Partners in UK offshore wind



Find out more on our website
www.morganandmona.com
or use this QR code



info@monaoffshorewind.com



Freepost MONA



0800 860 6263